

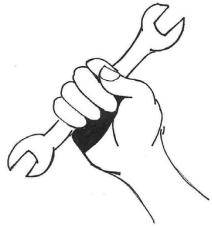


News to Reuse

Addison County Solid Waste Management District

Winter/Spring 2022

Repair Fair on March 5th!



The ACSWMD is partnering with the Hannaford Career Center's Makery to bring you another fantastic *Repair Fair* on March 5th. The Repair Fair is a free community event where volunteer fixers help repair participants' broken items. The goal is to keep usable, fixable things out of the landfill while sharing skills, excitement, and community connections to build a culture of repair.

The Repair Fair volunteer "fixperts" will help you fix or mend items such as electronics, small appliances, furniture, bikes, jewelry, clothing, and more.

Registration is required for this event! To register, please visit www.AddisonCountyRecycles.org.

Although registration is free, donations to the Makery at the time of the event are encouraged. Masks will be required for all participants.



The Repair Fair will be held at The Makery, located within the Hannaford Career Center at 51 Charles Ave, Middlebury, on Saturday, March 5, from 9 a.m. - 1 p.m.

For questions or accessibility info, email colin@acswmd.org

The District HazWaste Center is Open All Year

The HazWaste Center is open year-round! It's located at the District Transfer Station on Route 7 South in Middlebury. The HazWaste Center accepts household hazardous waste free of charge from District residents every Monday through Friday from 8 AM - 2 PM, and Saturday from 8:00 AM - 1 PM. Not sure if a chemical is hazardous or not? Visit www.AddisonCountyRecycles.org/hazwaste for a list of common household hazardous wastes.

Now Hiring:

Public Outreach Coordinator!

Are you the outgoing, creative type? Do you have a passion for waste reduction and helping others reduce their impact on the environment? Do you enjoy watching stuff tumble out of large trucks? If so, then you might be just the person we need! We're looking for someone to conduct outreach on behalf of the District to businesses, schools and the community at large on waste reduction, diversion, reuse and recycling.

A great fit for this job would be a self-motivated individual, with some website and design software skills, strong data tracking skills, and attention to detail.

Applicants must possess a Bachelor's Degree and at least one year of experience in successful community outreach and program development. Experience in community relations and communications, as well as knowledge of environmental sustainability and waste management is preferred.

We offer competitive pay and excellent benefits. Equal opportunity employer. Position open until filled.

Special Recycling Reminder: Household Batteries

Before you empty your drawer full of old batteries into the trash, you should know there's a better place for them to go. All primary cell (non-rechargeable) batteries, including AA, AAA, C, D-cell, as well as coin or button-cell batteries, can be brought to the District Transfer Station for free special recycling. All rechargeable batteries, like Ni-Cad, Ni-MH, Li-Ion, or small lead acid batteries, are also



accepted at no charge. These batteries contain many toxic chemicals and often pose a fire hazard, so they should never be thrown in the trash. NEVER place batteries of any kind in your regular household recycling.



Clean Plastic Bag & Film Recycling

The District offers special recycling for polyethylene plastic bags and film at its Transfer Station in Middlebury. These materials can't go in your blue bin. **Not all types of plastic film can be recycled**, so we need your help to make sure only the acceptable materials listed below end up in our collection container. If our plastic collection has too much of the wrong kind, we risk losing our market!

WE CAN ONLY ACCEPT POLYETHYLENE. Plastic film marked with any of the four labels on the right will meet our program criteria. These materials tend to stretch before tearing when you pull on a small section.



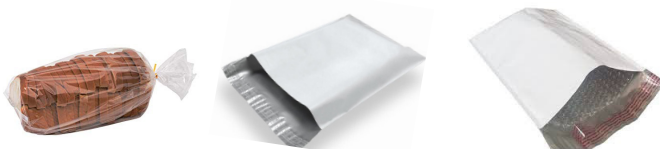
These polyethylene materials are accepted at the Transfer Station if they are EMPTY, CLEAN and DRY:



These items are accepted if they are empty, clean and dry and meet CERTAIN CRITERIA:

- Plastic shipping envelopes (may be bubble-lined)
- Plastic bread bags (no paper/plastic combo bags)
- Wood pellet & softener salt pellet bags

Criteria: As much as possible, cut out or tear off paper labels.



Criteria: Both ends MUST be completely cut off, and each bag must be turned inside out or completely cut down on one side to form an open sheet.



These items must go in the TRASH because they are generally not made from polyethylene:

Food-contact bags & packaging (other than those listed above), especially:

- Pre-washed salad mix bags
- Grape bags
- Chip bags
- Candy and energy bar wrappers
- Metallic/foil packaging & anything with shiny foil lining
- Snack food bags, including for pretzels & nuts
- Meat & cheese packaging
- Mesh bags

Also discard in the trash:

- Pet food & bird seed bags
- Woven grain & feed bags
- Biodegradable or compostable materials
- Cellophane
- Six-pack rings
- Paper envelopes lined with bubble wrap
- Anything labeled with a number that is not a 2 or a 4 (such as 5 or 7) or with the strike-through labels below:



Food Waste Reduction Tips

Composting is only one way to reduce your food waste. A better way is not to waste food to begin with. In 2019, an enormous 35% of food went unsold and uneaten in the United States. What can we do to make sure all food produced is being put to best use? We have a few ideas to help you in the kitchen that will allow you to use more food and waste less!

Shopping

1. Plan meals and make lists accordingly. When I go to the grocery store without a list or an idea of what I need, I often end up buying things I don't need that inevitably go to waste.
2. Shop the back of your fridge first. When food gets pushed to the back of my fridge, I usually forget about it until it starts to go bad. When looking for a snack, be sure to check the back of your fridge first.
3. Prepare perishable foods soon after shopping. When you get home after shopping, it helps to prep and store the food to make it last longer.

Storage

4. Store *apples and bananas* away from other fruits. Apples and bananas produce ethylene and make other fruits ripen faster.
5. Store *greens* (celery, lettuce, kale, spinach, cucumbers, asparagus) in an airtight container in the fridge. To keep them fresh and crispy for longer, add a little water to the bottom of the container.
6. Store *herbs* in a container with the stems covered in water for longer shelf life.
7. Berries can be stored in the fridge in an airtight container. Wait to wash the berries until you are ready to eat them, as this increases the likelihood that they will mold.
8. All meat can be kept in the fridge. Fresh meat lasts up to two days, while cooked meat remains unspoiled for 4 days.
9. Grains, cereals, and nuts are best kept in cool, dry places out of direct sunlight.



Cooking

1. We often produce waste (food and other) when we are rushed. Plan your meals and make them in advance to reduce waste.
2. Use veggie and meat scraps again by making broth with them. Freeze any veggie and meat scraps, including bones. When you're ready, remove them from the freezer and boil them in a pot of water to make a healthy broth.

Zero Waste Recipe: Banana Peel Bacon!

1. Wash banana peels to remove any pesticides.
2. Sauté peels in vegetable oil over medium heat until peels are caramelized and crispy.
3. Sprinkle with any of these spices or condiments: paprika, garlic powder, salt, or maple syrup.



Deciphering Shelf Life Labels

The labels "Best if Used Before," "Best By," "Use by," are often seen as indicating when a product becomes spoiled. However, this label only specifies guaranteed dates a food's flavor is at its best. A better way to tell if a product is safe to eat is to consider how it smells and looks. If you have a visceral reaction to the smell, your nose is telling you it's bad. If a product has mold or other organisms growing on it, or if the container is bulging or misshapen, then these are all signs that the food is unsafe to eat.

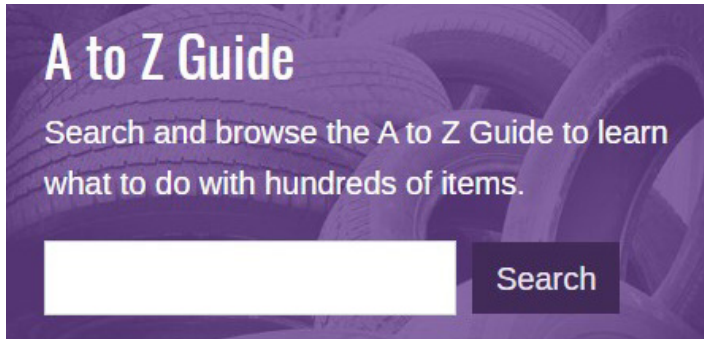


What is the Addison County Solid Waste Management District?

ACSWMD is a union municipal District that exists to cooperatively and comprehensively address the materials management interests of our 21 member towns: Addison, Bridport, Bristol, Cornwall, Ferrisburgh, Goshen, Leicester, Lincoln, Middlebury, Monkton, New Haven, Orwell, Panton, Ripton, Salisbury, Shoreham, Starksboro, Vergennes, Waltham, Weybridge, and Whiting. The District promotes waste reduction; maximizes diversion of materials through reuse, recycling, and composting; and provides for the disposal of remaining wastes.

District services include: use of the District Transfer Station in Middlebury (including the HazWaste Center); solid waste planning and management; public outreach; education programs, including school workshops and events; technical support and advocacy on waste-related issues; and enforcement against illegal burning and dumping.

Our website is a robust resource, and the A to Z Guide can tell you how to get rid of almost anything! If you can't find the info you need on our website, give us a call.



A to Z Guide
Search and browse the A to Z Guide to learn what to do with hundreds of items.

District Transfer Station

Location: 1223 Route 7 South, Middlebury
Hours: Mon-Fri: 7 AM - 3 PM, Sat: 8 AM - 1 PM

The **HazWaste Center** at the Transfer Station is open Monday through Friday, 8 AM - 2 PM & Saturdays, 8 AM - 1 PM. Business hazardous waste is received by appointment only.

We cannot accept household recyclables or small amounts of bagged trash from residents. Please call us for a list of town drop-off locations, or licensed haulers for curbside collection and cleanouts. The Transfer Station accepts many other special recycling items. Visit www.AddisonCountyRecycles.org for more information.

Recycling of the following landfill-banned items is mandatory for residents and businesses in the District: Newspaper, cardboard, boxboard, white & mixed paper, magazines & catalogs, plastic bottles (#1-#2), glass bottles (clear, green, brown), and metal cans. These mandated recyclables can be commingled in the same bin along with other non-mandated recyclable items that your hauler offers to collect. Contact your hauler or local drop-off for disposal of food scraps and leaf & yard waste. Food scraps, leaf & yard waste, and clean wood are all accepted at the District Transfer Station.

Loads must be properly sorted. We reserve the right to inspect & reject or surcharge improperly sorted loads.

All visitors must check in at the Scalehouse. Thank you!



“News to Reuse” is a publication of the Addison County Solid Waste Management District. Questions or comments? Visit our website, www.AddisonCountyRecycles.org or contact us at (802) 388-2333 or info@acswmd.org. This newsletter is printed on recycled paper.

Postal Patron

- Addison
- Bridport
- Bristol
- Ripton
- Cornwall
- Salisbury
- Ferrisburgh
- Shoreham
- Goshen
- Starksboro
- Vergennes
- Leicester
- Lincoln
- Waltham
- Middlebury
- Weybridge
- Whiting
- Monkton
- New Haven

ACSWMD
1223 Rte. 7 South
Middlebury, VT 05753



STANDARD A
US POSTAGE
PAID
Middlebury, VT
Permit No. 70