



# Bring these items to the District Transfer Station for special recycling!

ALL of the following items are accepted at the District Transfer Station at little or no charge.

Location: 1223 Route 7 South in Middlebury. Hours: Mon-Fri, 7 - 3 pm and Saturdays, 8 - 1 pm (for HazWaste hours, see red box on right). For disposal fees or for a list of landfill-banned items, call us or visit our website.



**APPLIANCES** (major) • AC units, dehumidifiers • washer/dryers • fridges • freezers • microwaves, stoves • woodstoves, etc.

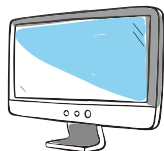
**BATTERIES** • wet-cell • cell phone • automotive • small dry-cell, button cell • NiHM, NiCad • rechargeable • lithium, lithium ion

**BOOKS**  
hard and soft cover



**DOCUMENTS**  
for secure destruction

**ELECTRONICS** • computers, monitors & peripherals • TVs • video game consoles • answering machines • MP3, DVD & CD players • VCRs • stereo equipment • power supply cords



**FOOD SCRAPS**  
including meat and bones



**FIRE EXTINGUISHERS**



**FLUORESCENT LIGHT BULBS**  
• compact fluorescent lamps • U-tube, circular or straight tubes • HID • UV, Neon or other specialty lamps



**HOUSEHOLD HAZARDOUS WASTE** • including all paint, stains, cleaners, solvents, etc.



\*Taken during HazWaste Center hours

**LEAVES & YARD DEBRIS**  
Trimmings • garden plants • mulches • grass clippings, etc.



**MERCURY DEVICES**  
• thermostats, intact thermometers, etc.



**PROPANE TANKS**  
1-lb camping, 20-lb grill size, etc.



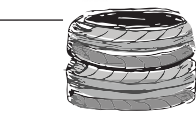
**SCRAP METAL** • Any item at least 80% made from metal.



**SHAVING RAZORS**  
blades and handles



**TEXTILES AND CLOTHING**  
Clean & dry, in bags



**TIRES**

**USED OIL**  
including filters and cooking oil



**WOOD** • clean lumber & natural wood (no paint, stain, chemicals, or glue.)



## HazWaste

**HazWaste Center hours are Mon-Fri, 8 - 2 pm & Sat, 8 - 1 pm**

Household products with labels that contain the words "Warning," "Danger," "Poison," or "Caution" DO NOT belong in the trash. Instead, bring these items to our HazWaste Center at no charge to District Residents:

- Automotive & engine supplies & fluids
- Home improvement supplies, including:
  - paints • stains • thinners
  - varnish • adhesives
  - tars • household cleaners
  - drain openers • garden supplies
  - fertilizers • pesticides • gas cylinders
  - mercury containing devices & lighting



**PLEASE NOTE:** Businesses with hazardous waste must register for an appointment time, and are responsible for all disposal costs.

## REUSE

The District's **REUSE IT OR LOSE IT!** sheds are closed. Consider other ways to donate household goods and building materials in reusable condition. Methods include donating goods and materials to family and friends, advertising reusable goods on Front Porch Forum, Facebook Marketplace, FreeCycle or Craigslist, hosting a yard sale or donating to a local thrift store.

## Town Drop-Offs

District residents & businesses can bring trash, recycling, food scraps, and leaf & yard waste to one of 17 town drop-off stations. Some exclusions apply. To learn more, visit [AddisonCountyRecycles.org](http://AddisonCountyRecycles.org) and search, "Town Drop-Off."



ADDISON COUNTY  
SOLID WASTE  
MANAGEMENT DISTRICT

# The Mini-Disposal Guide for Reusables, Recyclables, Compostables & Trash in Addison County

## Recycling: It's the law in Vermont.

It is illegal to throw recyclables and other banned items away as landfill-bound trash.

**? Got questions about disposal options, fees, and specifications? Contact ACSWMD!**

Phone: (802) 388-2333

E-mail: [acswmd@acswmd.org](mailto:acswmd@acswmd.org)

Visit: [www.AddisonCountyRecycles.org](http://www.AddisonCountyRecycles.org)

Location: 1223 Rte. 7 S., Middlebury

**? Got questions about your curbside pickup service?**

Contact your hauler.



Printed on 100% post-consumer recycled paper

**BUT WAIT, THERE'S MORE!** For info on what to do with over 100 materials, visit our website and click on the A to Z Guide.



# Mandatory Recyclables. Banned from landfill disposal. No food residue. Items must be clean, empty & dry.

## PAPER

\* MUST BE EMPTY, CLEAN & DRY.\*

NEWSPAPERS, MAIL,  
OFFICE PAPER, ETC.



## CARDBOARD & BOXBOARD



**NOPE:** Food residue • paper cups • Tyvek, plastic, foil, or waxed “paper” • padded mailers • plastic bags • paper towels & plates • spiral or 3-ring binders • animal food or litter bags • stickers or sticker backing

## PLASTIC

\* MUST BE EMPTY, & RINSED CLEAN.\*

BOTTLES, TUBS & JUGS



SINGLE-USE FOODWARE



**NOPE:** Food residue • filmy plastic (bags, pellet bags, wraps, bubble wrap) • durable items (toys, housewares) • hazardous product containers • Styrofoam • utensils • compostable or biodegradable “plastic” • loose caps or lids under 2” across

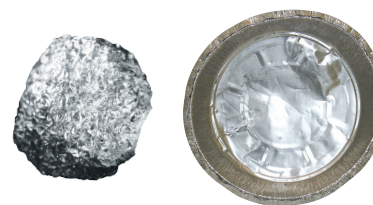
## METAL

\* MUST BE EMPTY, & RINSED CLEAN.\*

CANS



ALUMINUM FOIL & PANS



**NOPE:** Food or beverage residue • propane tanks • batteries • scrap metal • containers or aerosol cans that once held hazardous materials • caps, lids or jar lids under 2” across

## GLASS

\* MUST BE EMPTY, & RINSED CLEAN.\*

BOTTLES



JARS



**NOPE:** Food residue • light bulbs • dishes • Pyrex • ceramics • drinking glasses • vases • window panes • mirrors • candle jars • loose plastic or metal caps or lids smaller than 2” across

### Common Blue Bin No-Nos:

**Cartons** • Ice cream containers, orange juice cartons, milk cartons & soup cartons are not recyclable.  
**Shoes & clothing** • Not acceptable in blue-bins! Recycle at District Transfer Station.  
**Automotive parts & other scrap metal** • Only metal food & beverage containers allowed in recycling bins. Recyclable as scrap metal at District Transfer Station.  
**Plastic bags, Styrofoam in any form** • Not accepted in blue bins! See Q&As for more info. →

**Q: Why aren't plastic bags recyclable in my blue bin?** **A:** They get tangled in the recycling equipment, causing facility shutdowns. Grocery stores and the District Transfer Station accept them for recycling!

**Q: Why aren't paper cups recyclable?** **A:** They typically have plastic or wax coatings.

**Q: Do I really have to rinse my plastic & glass recyclables?** **A:** Yep. Recycling works because companies that buy recyclables to make into new products need those recyclables to be uncontaminated. Food & liquids are contaminants. **Hint:** Soak peanut butter jars with hot, soapy water overnight--it'll be easier to clean.

**Q: Why isn't Styrofoam recyclable?** **A:** We don't produce enough in Addison County to make it economically or environmentally feasible to collect it and ship it to market. We recommend giving Styrofoam peanuts to local shipping companies or to those who regularly ship items.

**Q: Why isn't everything with a number recyclable?** **A:** Recycling symbols, known as chasing arrows, do not determine recyclability. They are meant to indicate the type of plastic the item is made from.

**NOTE:** All items should be at least 2” in any 2 dimensions.

